



ITEM NO	
QUANTITY	
JOB NAME	
JOB NO	


ROUND ROTATING DESSERT DISPLAY

SPECIFICATION SHEET



PART NUMBER DESIGNATION

CP-RRDD-36-_____

Option code from option list 

STANDARD FEATURES

- 1/2" Thick tempered glass shelves
- Segmented bottom shelf for easy cleaning
- Dual speed controls
- Full 304 stainless steel construction
- Mirror finish stainless steel center column
- Heavy duty drive motor
- Two year warranty parts and labor

OPTIONS

OPTION CODE	DESCRIPTION
NP	NEMA 5-15 115V PLUG
SGS	STARFIRE GLASS SHELVES
LD	LOCKING CABINET DOORS
SSCBC	STAINLESS STEEL CABINET BASE W/ COUNTER TOP
SSCBNC	STAINLESS STEEL CABINET BASE NO COUNTER TOP

SPECIFICATIONS

The CHAR Round Rotating Dessert Display is a glass, three tier product display unit. This ambient temperature display case elegantly shows any dessert pastry product in a 360 degree view for maximum presentation. Speed control allows for the setting at optimal viewing pleasure and can be slowed down or turned off easily. Designed to be integral to a counter with the base hidden behind the cabinet and only the glass shelves visible. The bottom glass section is in four segments for easy removal and cleaning. The upper glass shelves are easily cleaned from the top and bottom.

CONSULTANT APPROVAL:



CHAR Products, LLC

Ph. 702-489-9888

Fax. 702-489-9898

Website: www.charprd.com

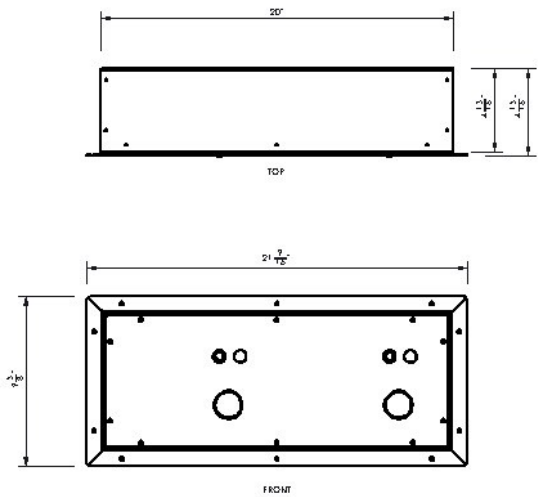
Email: info@charprd.com

2915 Losee Rd. Ste 106

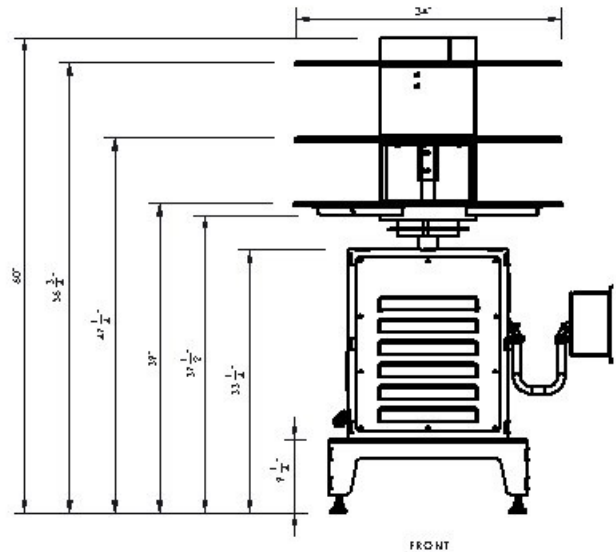
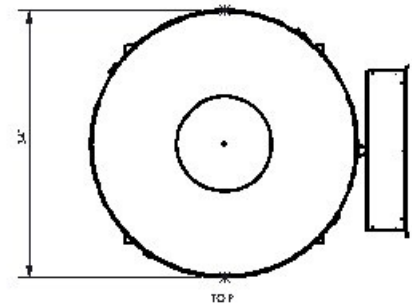
N. Las Vegas, NV 89030



MODEL #	STANDARD DIAMETER	ELECTRIC	SHIPPING WEIGHT ESTIMATED
CP-RRDD-36-__	36	120V-1PH-20A	650 LBS.



Control box for Dessert Display



INSTALLATION INSTRUCTIONS

1. Observe all local and national codes.
2. This appliance is manufactured for commercial use ONLY. It is NOT intended for residential indoor use.
3. We upgrade our products regularly and in doing so, materials, specifications, and model numbers are subject to change without notice.

CHAR Products, LLC

Ph. 702-489-9888

Fax. 702-489-9898

Website: www.charprd.com

Email: info@charprd.com

2915 Losee Rd. Ste 106

N. Las Vegas, NV 89030