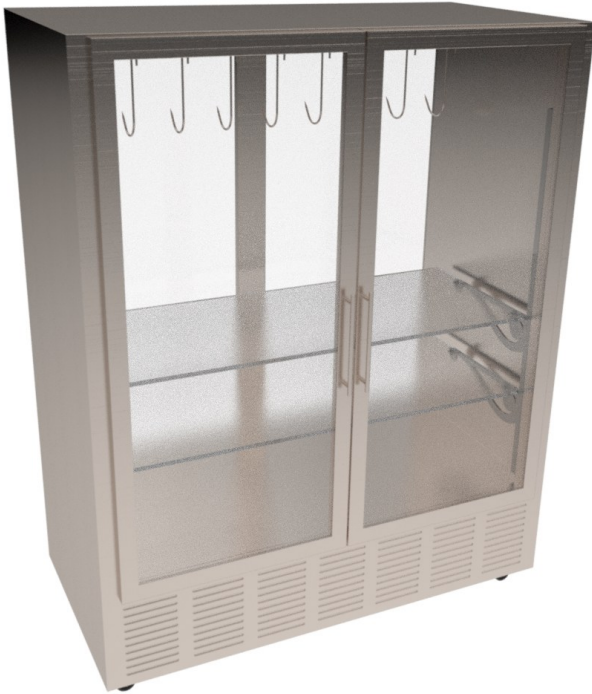




MEAT AGING DISPLAY CASE

SPECIFICATION SHEET



* Shown with optional casters

SPECIFICATIONS

CHAR Products has over 20 years experience designing, engineering and manufacturing Meat Aging Display cases. Our products reside all over the United States, in some of the most prestigious establishments. Each element is evaluated for performance and conformity to ETL/NSF7 safety standards. Each case is tested and certified at our facility before shipment.

Contact our sales team and see what we can do for your next Meat Aging Display case project.

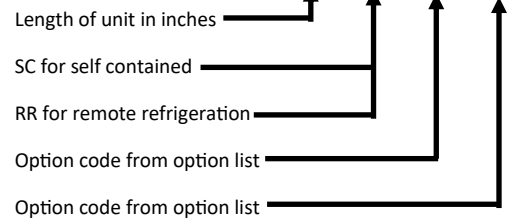
- Must choose (SC) for Self Contained or (RR) for Remote Refrigeration
- Consult factory for custom sizes
- Engineering collaboration with factory required on (RR) units
- Refrigerant will be R404A/R448A on all self contained units.



ITEM NO	
QUANTITY	
JOB NAME	
JOB NO	

PART NUMBER DESIGNATION

CP-MDC- - - -



STANDARD FEATURES

- Stainless steel interior and exterior
- Foamed in place high density Polyurethane insulation
- 6" Legs
- Humidity and temperature monitoring
- Heavy duty CHAR proprietary door hinging
- Glass doors, thermal dual pane, LI glass
- Stylish full height door handles
- Door Locks
- Standard adjustable stainless steel shelving
- Meat hooks and hanging bars
- Two year warranty: parts & labor

OPTIONS

OPTION CODE	DESCRIPTION
CS	CUSTOM DISPLAY SHELVING
CLED	CUSTOM LED LIGHTING OPTIONS
CC	CUSTOM INTERIOR/EXTERIOR FINISH
GNG	GLASS TINTS NON-GLARE
C	CASTERS

CONSULTANT APPROVAL:

CHAR Products, LLC

Ph. 702-489-9888

Website: www.charprd.com

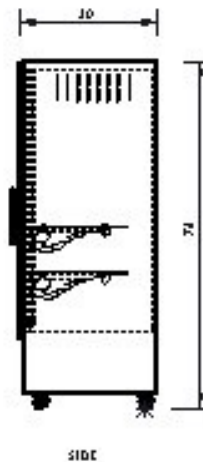
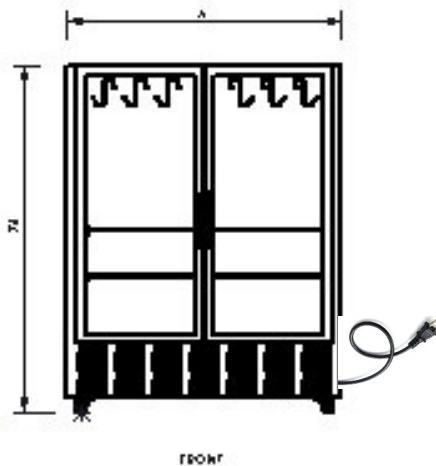
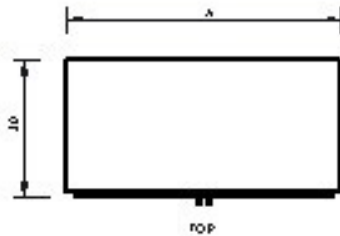
2915 Losee Rd. Ste 106

N. Las Vegas, NV 89030

© copyright 2024



MODEL # SELF CONTAINED	LENGTH A	ELECTRIC (SC) MODELS	SHIPPING WEIGHT ESTIMATED
CP-MDC-36-SC-__-__	36"	120V-1PH-15A	1,100 LBS
CP-MDC-48-SC-__-__	48"	120V-1PH-15A	1,250 LBS.
CP-MDC-60-SC-__-__	60"	120V-1PH-15A	1,400 LBS.
CP-MDC-72-SC-__-__	72"	120V-1PH-15A	1,550 LBS.



INSTALLATION INSTRUCTIONS

1. Observe all local and national codes.
2. This appliance is manufactured for commercial use ONLY. It is NOT intended for residential indoor use.
3. We upgrade our products regularly and in doing so, materials, specifications, and model numbers are subject to change without notice.

CHAR Products, LLC

Ph. 702-489-9888

Fax. 702-489-9898

Website: www.charprd.com

Email: info@charprd.com

2915 Losee Rd. Ste 106

N. Las Vegas, NV 89030